

DAISY CRESENT LENS

Direct | Pendant



DAISY CRESENT LENS Linear Luminaire in a sleek design with Extruded aluminium housing and with premium powder coating finish.

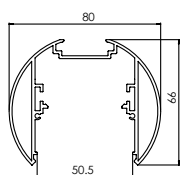
Powered by high-quality LED's with a binning tolerance of ≤ 3 SDCM and CRI ≥ 90 . The luminaire maintains atleast 70% of its luminous flux after 50,000 operating hours, guaranteeing long-term reliability. High efficiency lens with 3 beam angle options of 30°, 50° and widespread 80°

With a standard size of 1200 mm length, 66 mm height and 80 mm diameter, this fixture is crafted for direct light distribution making it ideal for professional applications.

Customisations in RAL finish, Wattages, Length and Lens + Prismatic diffuser option available as per request to enhance installation and functionality.

Single Line Diagram

Pendant



DAISY CRESENT LENS



Quick Info

Mounting Type

Pendant

Material Colour

Customize RAL available

Protection mode

IP40

Driver Details

ON/OFF/, DALI-2 DT6 / DALI-2 DT8/ DALI +

Power Factor (PF) -0.95

THD- <10%

UGR - <19

LED

CCT- 3000K/ 4000K/ 5700K/ TUNABLE WHITE 2700K-6500K

CRI- ≥ 90

Life Span - L70@50000h

MacAdam - ≤ 3 SDCM

Beam Angle

30°/ 50°/ 80°

Optics

Lens

Micro Prismatic Diffuser

Efficacy

3000K- 111.4

4000K- 124.4

5700K- 140.1

Tunable White 2700K-6500K- 124.4

Electrical

Wattage - 28W/4ft

Opt Wattages Available -15W/4ft, 20W/4ft, 25W/4ft

Input Voltage- 220-240 VAC

Physical

Length- 1200mm

Height- 66 mm

Diameter- 80 mm